



## Base Twin Waterrail with 180mm ABS Overhead Chrome (3\*)

### IMPORTANT NOTE:

Product must be installed to the requirements of AS/NZS 3500 by a qualified plumber. Your shower comes to you already factory assembled and tested. We do not recommend the dismantling of any internal part of the shower. The shower has been factory tested and sealed to give the best performance.

### Note:

This shower is suitable for high pressure water applications. This product is not designed to be used with gravity-fed water heaters. Using this product in conjunction with low and unequal pressure supply networks, instantaneous water heaters, tempering valves and thermostatic mixing valves may result in unsatisfactory performance.

### INSTALLATION INSTRUCTIONS:

#### Do not overtighten the threaded connections

1. Ensure male wall connection has an adequate amount of thread exposed for the diverter's inlet connection. If required, cut back the male thread to an appropriate length.
2. Correctly apply thread sealing tape or a suitable thread sealing compound to the wall thread.
3. Use a 3mm Allen key to remove the wall adapter (6) from the diverter. Screw in the adapter into the wall thread. Re-secure the diverter back into the wall adapter. Ensure the diverter is positioned vertically.
4. Insert the top rail tube (4) into the top outlet of the diverter and secure them together with the 2.5mm hex set screw in the diverter.
5. Connect the female thread end (24) of the lower rail tube (25) to the bottom connection of the diverter. Ensure the rubber seal (21) inside the rail tube connection is seated correctly
6. Slide the opening in the wall bracket (28) through the bottom of the lower bar and mark the desired bracket location.
7. Remove the bracket from the bottom bar and remove the slotted fixing plate (30).
8. Drill the fixing plate securely to the wall using the supplied fixing kit (29)(31).
9. Slide the rail slider (26), soap dish (27) and wall bracket through the bottom bar. Secure the hand shower by using the dial on the side. Secure the soap dish by using the fastening nut on the bottom of the soap dish. Fit the wall bracket back onto the fixing plate.
10. Connect the hex nut end of the shower hose (35) to the bottom of the lower rail tube. Connect the other end to the hand shower (32). Ensure both rubber seals seated correctly inside each hose connection end.
11. Fit the overhead shower (1) to the top rail tube, ensuring that the connection seal (3) is seated correctly.
12. Test water tightness of all connections.

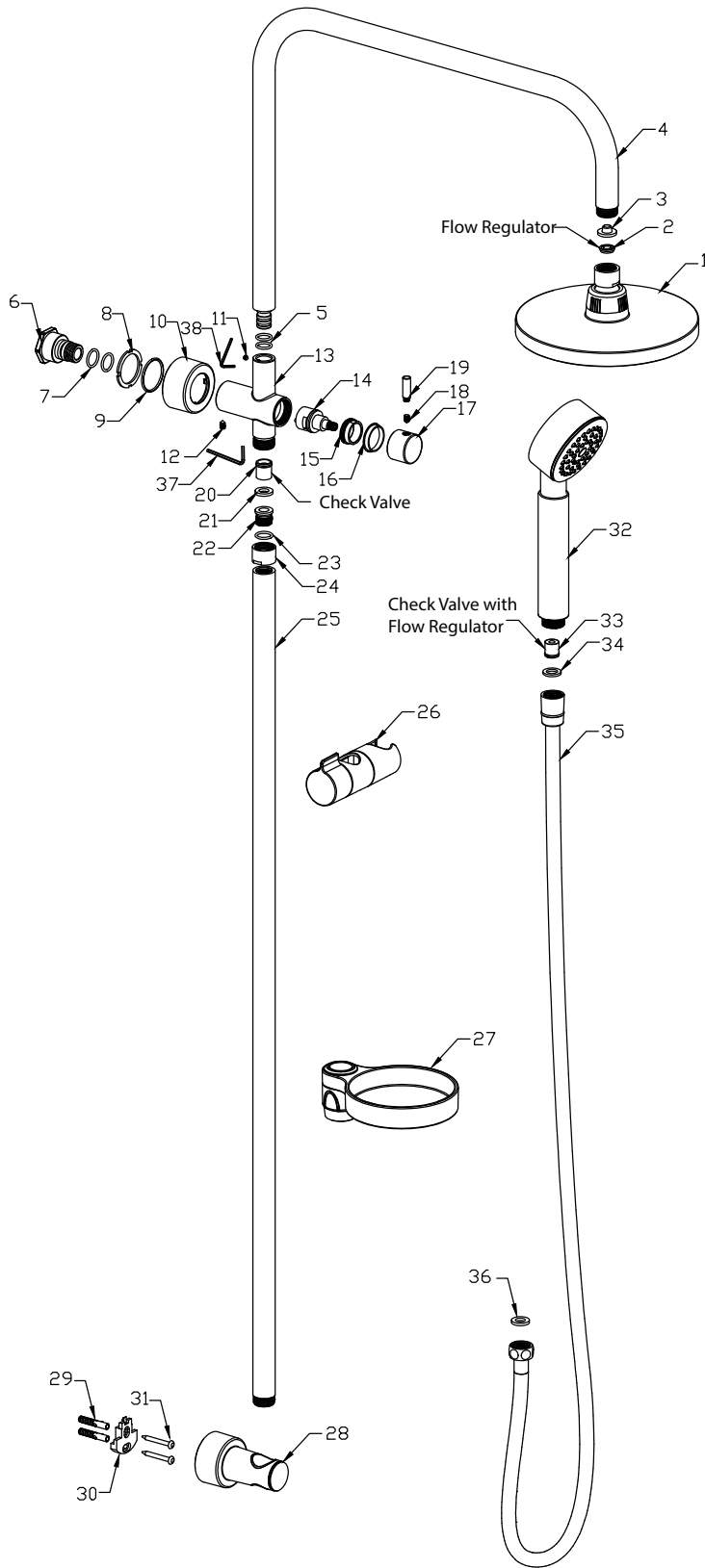
### CLEANING RECOMMENDATIONS:

We recommend the use of soapy water or approved cleaners. This product should not be cleaned with abrasive materials. Damage caused by any improper treatment is not covered by the product warranty. Refer to Warranty Conditions

**Plumbers, please ensure a copy of the Installation Instructions are left with the end user for future reference**



# Base Twin Waterrail with 180mm ABS Overhead Chrome (3\*)



Reference No.	Description	Reece Code
1 - 3	Overhead Shower	9503539
4	Rail Tube	
5	O-ring	
6 - 20	Diverter Assembly with Wall Bracket	9508685
21	Washer	
22	Connector	
23	O-Ring	
24	Screw Cap	
25	Rail Tube	9508686
26	Rail Slider	9508687
27	Soap Dish	
28 - 31	Wall Bracket with Fixings	
32 - 33	Handshower	9508688
34 -36	Shower Hose	9504188
37	M6 Hex Key	
38	M4 Hex Key	

Plumbers, please ensure a copy of the Installation Instructions are left with the end user for future reference

