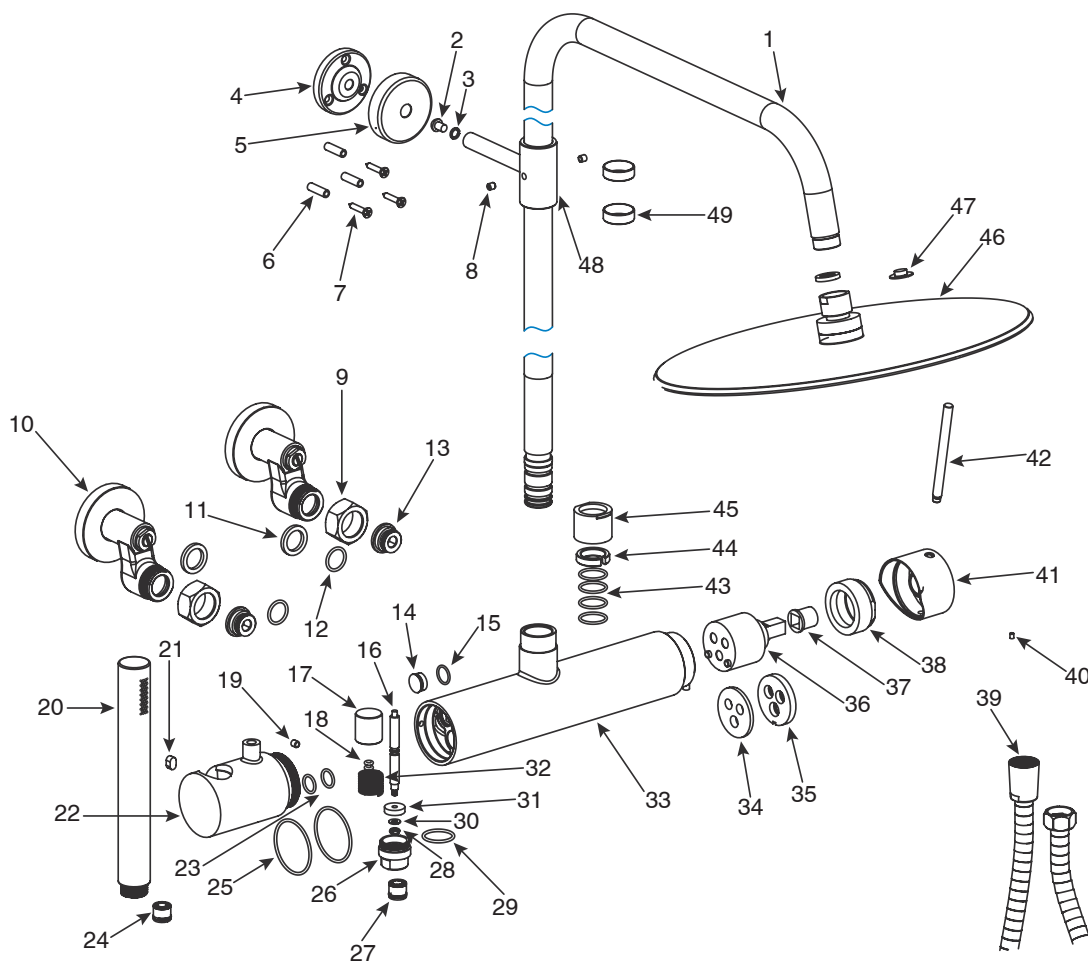




# Milli Inox Wall Mount Twin Rail Shower with 300mm Overhead (3\*)





## Milli Inox Wall Mount Twin Rail Shower with 300mm Overhead (3\*)

Number	Part
1	Rail Tube
2	Screw
3	Spring Washer
4	Wall Mount Bracket Base
5	Wall Mount Bracket
6	Plastic Anchor
7	Expansion Screw
8	Inner Hexagon Screw
9	Stainless Steel Nuts
10	Offset Inlet
11	Rubber Flat Washers
12	Rubber Sealing Ring
13	SS Left Hand Thread Inner Hexagon Nuts
14	Plug
15	Rubber Sealing Ring
16	Diverter Lift Rod
17	Head of Pull Rod
18	Rubber Sealing Ring
19	Inner Hexagon Screw
20	Handshower
21	Rubber Pad
22	Socket
23	Rubber Sealing Ring
24	Check Valve
25	Rubber Sealing Ring

Number	Part
26	Water Outlet Connect
27	Check Valve
28	External Hexagon Nut
29	Rubber Sealing Ring
30	SS Flat Washer
31	Rubber Flat Washer
32	Spring
33	Body
34	Cartridge Rubber Flat Washer
35	Cartridge Base
36	Cartridge
37	Plastic Cover of Cartridge
38	Retaining Nut
39	Shower Hose
40	Inner Hexagon Screw
41	Cap of Handle
42	Body of Handle
43	Rubber Sealing Ring
44	POM Clip
45	Fixed Sleeve
46	Showerhead
47	Rubber Flat Washer
48	Flow Controller
49	Rubber Flat Washer