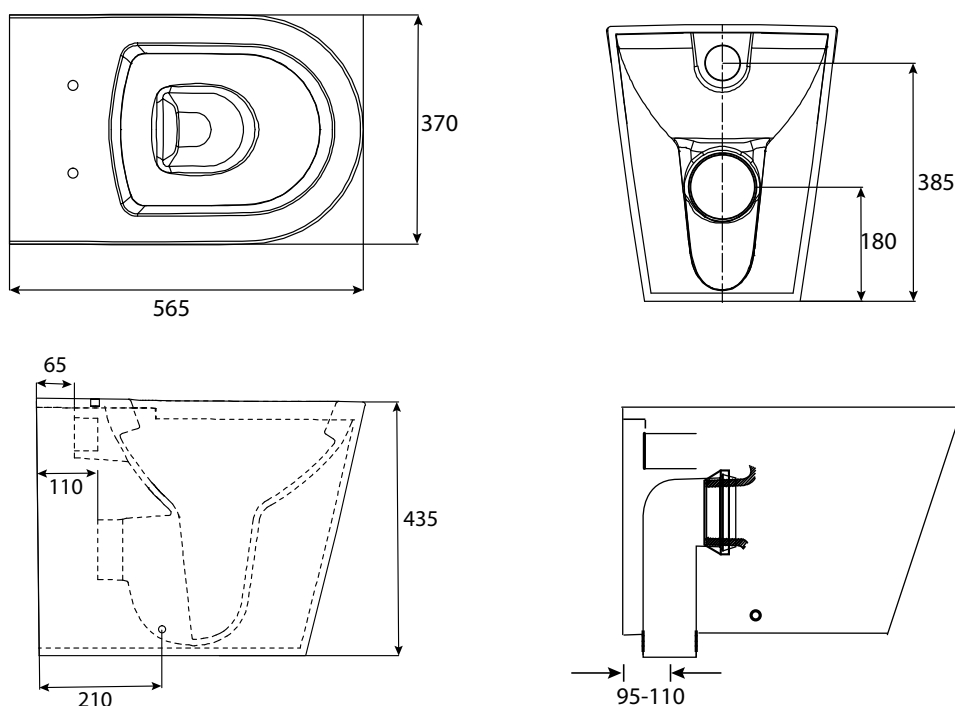


KADO

LUX BACK TO WALL OVERHEIGHT PAN



Dimensions are nominal measurements only.

SPECIFICATIONS

Recommended Use	Domestic, Hotel and Commercial
Material	Vitreous China
Colour	White
Weight	30kg
Seat	Soft close quick release toilet seat Soft close quick release thin toilet seat
Rim Configuration	Box Rim
Bowl Configuration	Universal S & P (Converts to S Trap using plastic S-bend provided)
Set Out	S Trap 95-110mm
Pan Fixing	Screwed to the floor. (Fixing screws supplied)



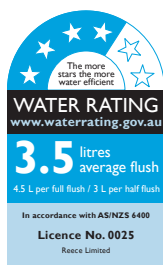
To see the complete KADO range go to www.reece.com.au/bathrooms

CLEANING RECOMMENDATIONS

We recommend the use of soapy water or approved cleaners.

This product should not be cleaned with abrasive materials.

Damage caused by any improper treatment is not covered by the product warranty. Refer to Warranty Conditions.



Disclaimer: Products in this specification manual must by regulation be installed by licensed and registered trade people. The manufacturer/distributor reserves the right to vary specifications or delete models from their range without prior notification. Dimensions are nominal measurements only. Dimensions and set-outs listed are correct at time of publication however the manufacturer/distributor takes no responsibility for printing errors.

Tech Page Version 1

KADO



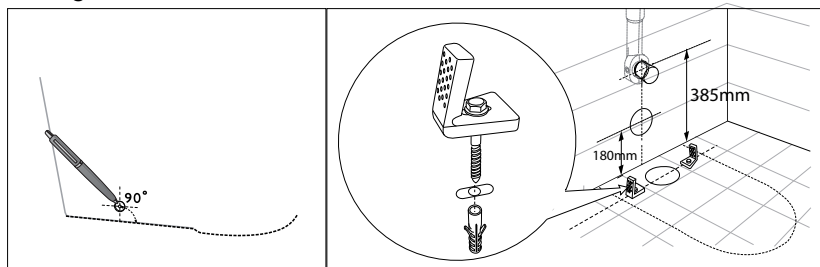
KADO

LUX BACK TO WALL OVERHEIGHT PAN

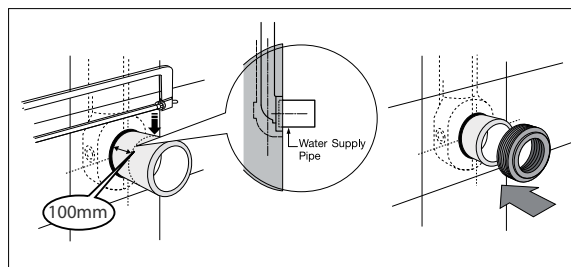
INSTALLATION INSTRUCTIONS

- Note:** All measurements for roughing in should be taken from the finished wall/floor

Fixing bracket & Water inlet



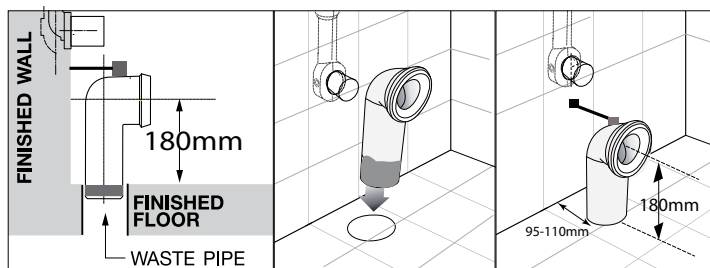
Position pan against wall and mark off pan fixing holes on floor.



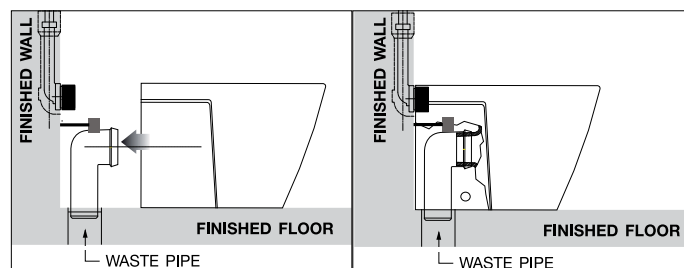
Water inlet pipe should be roughed in at 380mm. Cut inlet pipe so that 100mm protrudes from finished wall and attach seal.

S-Trap Installation

NOTE: This is a set out of 95-110mm

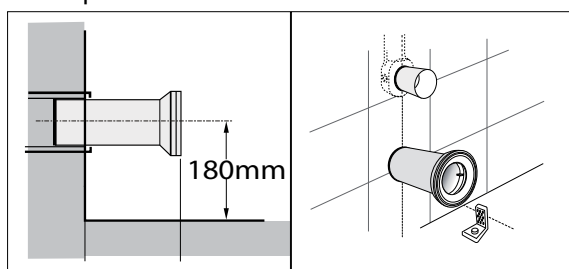


Insert waste pipe into floor at a setout of 95-110mm and 180mm above finished floor and fix bracket into position as per diagram above.

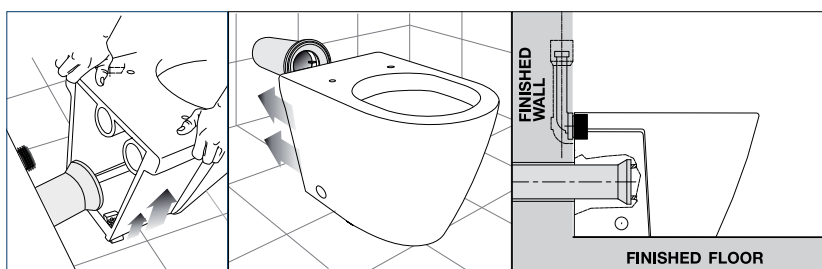


Push pan into position. Ensure that you make a firm connection with inlet and outlet pipes and avoid disturbing the floor fixing brackets. Flush test for leaks.

P-Trap Installation

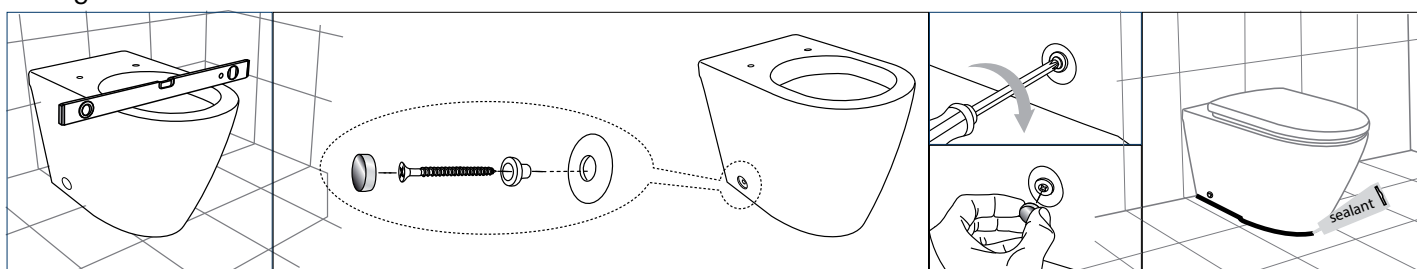


100mm DWV with pan collar (not supplied).



Push pan back into position. Ensure that you make a firm connection with inlet and outlet pipes and avoid disturbing the floor fixing brackets. Flush test for leaks.

Fixing Pan to Floor



Ensure that pan is level. Fix pan to floor using fixing screws and flexible sealant. Install soft closing seat.

Plumbers, please ensure a copy of the installation instructions is left with the end user for future reference

KADO

reese

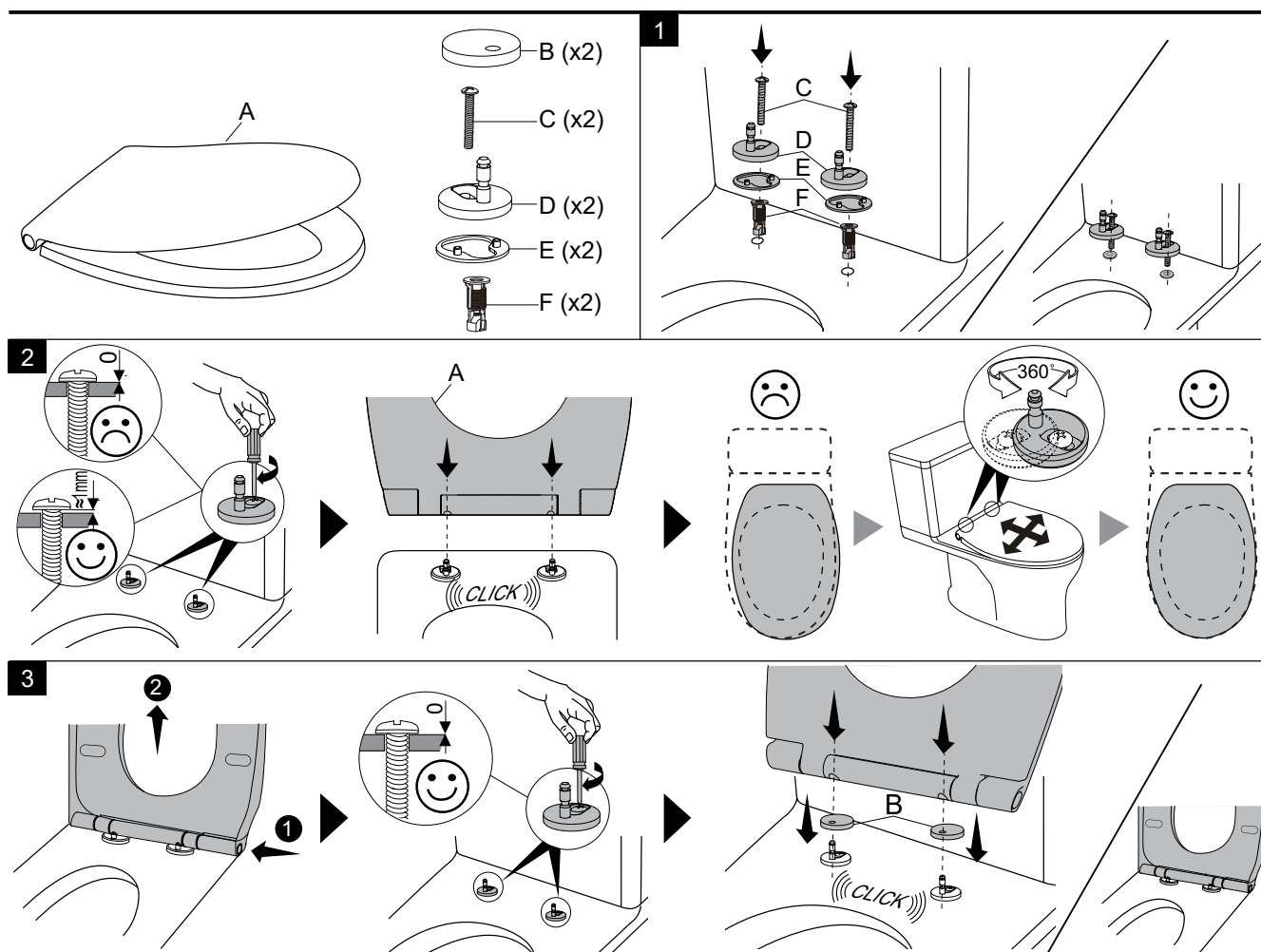
KADO

LUX BACK TO WALL OVERHEIGHT PAN

LUX THIN SEAT INSTALLATION INSTRUCTIONS

Important Note:

Soft close seat and covers can take up to 30 seconds to close. Do not force the closing mechanism as this may result in damage. The fixings of your seat may require re-tightening occasionally depending on use.



SPARE PARTS

Picture	Reece Code	Product Description
	9506341	KADO LUX THIN SEAT BUFFER SET
	9506342	KADO LUX THIN SEAT HINGE SET

Plumbers, please ensure a copy of the installation instructions is left with the end user for future reference

KADO



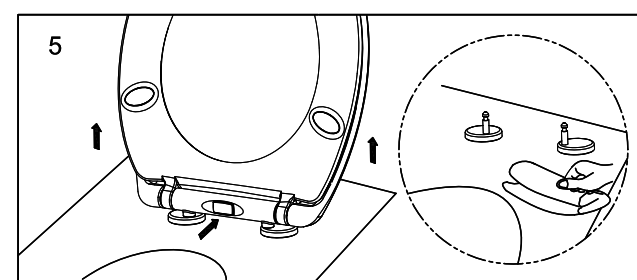
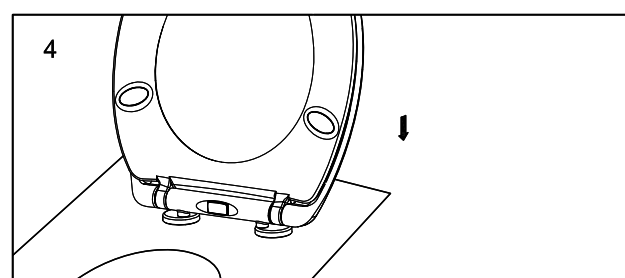
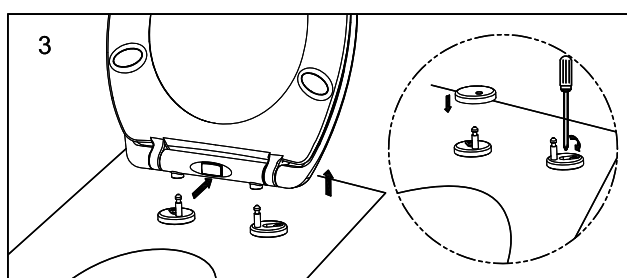
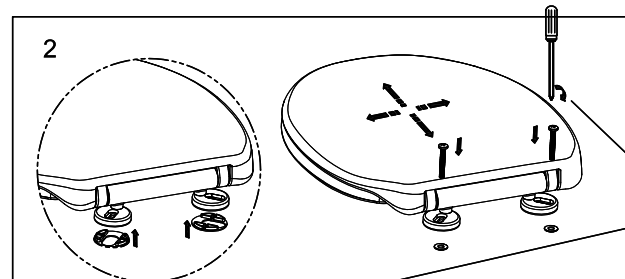
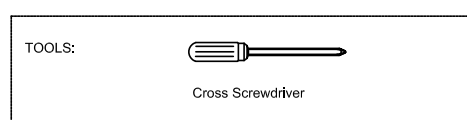
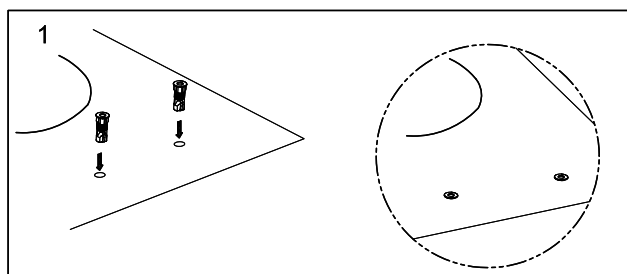
KADO

LUX BACK TO WALL OVERHEIGHT PAN

LUX SEAT INSTALLATION INSTRUCTIONS

Important Note:



Soft close seat and covers can take up to 30 seconds to close. Do not force the closing mechanism as this may result in damage. The fixings of your seat may require re-tightening occasionally depending on use.



Top Fixing Installation procedure.

1. Insert the nylon toggles into the hinge holes of the pan.
2. Mount the hinges onto the shaft of the toilet seat.
3. Plug the bolt into the nylon toggle.
4. Align the toilet seat with the pan.
5. Tighten the screws.
6. Push the button to release the seat.
7. Lift the toilet seat.
8. Insert hinge covers over posts.
9. Fix seat into final position.

SPARE PARTS

Picture	Reece Code	Product Description
	9506723	KADO QUICK RELEASE SCS BUFFER SET
	9503294	TOP FIX QUICK RELEASE HINGE SET

Plumbers, please ensure a copy of the installation instructions is left with the end user for future reference

KADO

