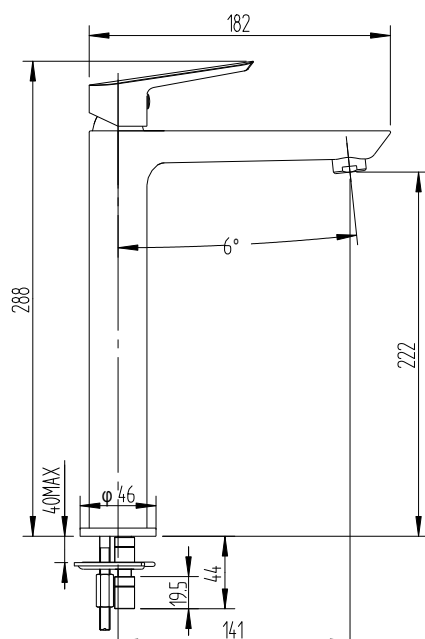


# MIZU

## BLISS EXTENDED BASIN MIXER



Dimensions are nominal measurements only.

### SPECIFICATIONS

<b>Recommended use</b>	Domestic, hotel and commercial
<b>Colour availability</b>	Chrome White/Chrome or Matte Black
<b>Pressure rating</b>	Maximum continuous operating pressure 1000kPa. For best performance and longer life we recommend 150-500kPa. Hot and cold water inlet pressure should be equal.
<b>Temperature rating</b>	Maximum continuous working temperature 80°
<b>Suitable Hot Water Units</b>	Storage tank: Yes Continuous Flow: Yes Gravity Feed: Not suitable
<b>Water efficiency</b>	4 Stars, 7.5 L/min



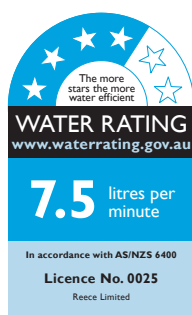
To see the complete Mizu range go to [www.reece.com.au/bathrooms](http://www.reece.com.au/bathrooms)

### CLEANING RECOMMENDATIONS

We recommend the use of soapy water or approved cleaners

This product should not be cleaned with abrasive materials.

Damage caused by any improper treatment is not covered by the product warranty - refer to Warranty Conditions.



**W**  
WaterMark  
AS/NZS 3718  
WM 022094

**Disclaimer:** Products in this specification manual must by regulation be installed by licensed and registered trade people. The manufacturer/distributor reserves the right to vary specifications or delete models from their range without prior notification. Dimensions are nominal measurements only. Dimensions and set-outs listed are correct at time of publication however the manufacturer/distributor takes no responsibility for printing errors.

Tech Page Version 4

**reece**

# MIZU

## BLISS EXTENDED BASIN MIXER

### Important Note

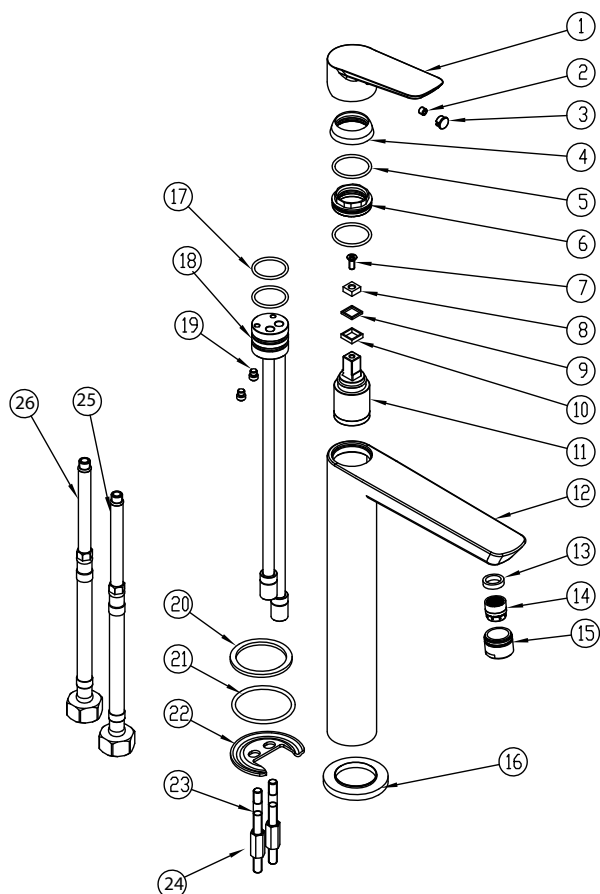
Mixer must be installed to the requirements of AS/NZS 3500 by a qualified plumber. Your mixer comes to you already factory assembled and tested. We do not recommend the dismantling of any internal part of the mixer.

### INSTALLATION INSTRUCTIONS

1. Please flush out new pipe work prior to connecting the new mixer.
2. All mixers should be installed with isolating stop cocks (Arco).
3. This tap is suitable for high pressure applications where both hot and cold water supply pressures are at 150kPa or above.
4. Place the sealing washer (20) and dress ring (16) into position.
5. Fit the tap body (12) into the mounting hole making sure first that the flexible hoses (25, 26) are firmly tightened into the base of the body. (Do not use teflon tape on threads.)
6. From underneath apply your washer (20) prior to positioning the horse shoe plate (22).
7. Lock the mixer onto the basin or benchtop by tightening the lock nut (6).
8. Connect the flexible hoses to the hot and cold isolating stops, hand tighten plus half a turn of the nut to provide a watertight joint. Ensure that hoses are not under tension, twisted or kinked and if bent have a minimum radius of 30 degrees.
9. Check for leaks.

### Servicing - Replacement of Cartridge

1. Remove cap (3) and unscrew the grub screw (2) using allen key.
2. Lift off handle (1) and remove the cartridge dome (4), unscrew brass locking nut (6) and lift out cartridge (11).
3. Replace the cartridge (11), replace the brass locking nut (6), replace the cartridge dome (4) and replace handle (1). Tighten grub screw (2) and push in indicator cap (3).



### Exploded View

Item	Description
1	Mixer Handle
2	Grub Screw
3	Decorative Cover
4	Cartridge Dome
5	O-Ring
6	Cartridge Lock Nut
7	Fixing Screw
8	Washer
9	Washer
10	Washer
11	Cartridge
12	Mixer Body
13-15	Aerator Complete
16	Dress Ring
17	O-Rings
18	Cartridge Mounting Block
19	Fixing Pins
20	Dress Ring Washer
21	Bottom O-Ring
22	Horse Shoe Plate
23	Fixing Rods
24	Hex Nuts
25	Flexible Hose (Cold)
26	Flexible Hose (Hot)

Plumbers, please ensure a copy of the installation instructions is left with the end user for future reference

m i z u

reece