

mizu

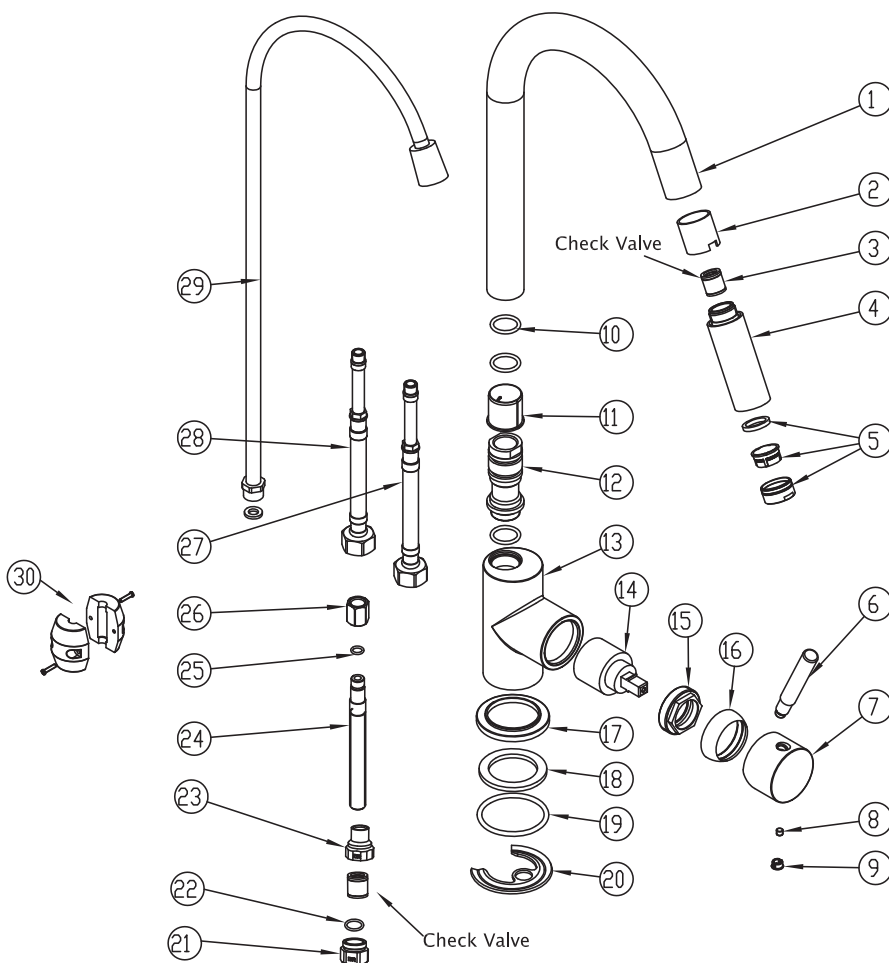
Mizu Drift Pull Out Sink Mixer (4*)

IMPORTANT NOTE:

Mixer must be installed to the requirements of AS/NZS 3500 by a qualified plumber. Your mixer comes to you already factory assembled and tested. We do not recommend the dismantling of any internal part of the mixer. The mixers are factory tested and sealed so as to give the best performance.

INSTALLATION INSTRUCTIONS:

1. Please flush out pipe work prior to connecting the new mixer.
2. All mixers should be installed with isolating stop cocks (Arco brand recommended).
3. This tap is suitable for high pressure applications where both hot and cold water supply pressures are at 150kPa or above.
4. Place the base washer (18) and Dress Ring (17) into position. Fit allthread (24) to mixer body (13) using allen key supplied.
5. Place the tap body (13) into the sink hole making sure first that the flexible connectors (27, 28) are firmly tightened into base of the body.
6. Fit washer (19) and horse shoe plate (20) onto Threaded Rod Assembly (24). For stainless steel sink, thread brass spacer sleeve and fix mixer to sink with brass lock nut (26).
7. Screw adapter (21,22,23) firmly onto threaded rod (24).
8. Connect the flexible Pull-Out Hose (29) by tightening the adapting nipple making sure first to insert the rubber seal.
9. Connect the hot and cold water supplies to isolating stop cocks. Fit lead weight (30) to flexible pull out hose (29) so that hand piece (4) fully retracts into the tap body.
10. Test for leaks as per AS/NZS 3500.



Reference No.	Description	Reece Code
1.	Spout	
2-5.	Pull Out Handle Complete	9503188
6-9.	Handle Complete	9503187
10.	O-Ring	
11-13.	Mixer Body	
14.	Cartridge	9503176
15.	Cartridge Lock Nut	
16.	Cartridge Dome	
17.	Dress Ring	
18.	Base Washer	
19.	Washer	
20.	Horse Shoe Plate	
21-25.	Threaded Rod Assembly	
26.	Fixing Nut	
27.	Flexible Hose Cold	9503181
28.	Flexible Hose Hot	9503180
29.	Flexible Pull Out Hose	
30.	Lead Weight	

Plumbers, please ensure a copy of the Installation Instructions are left with the end user for future reference