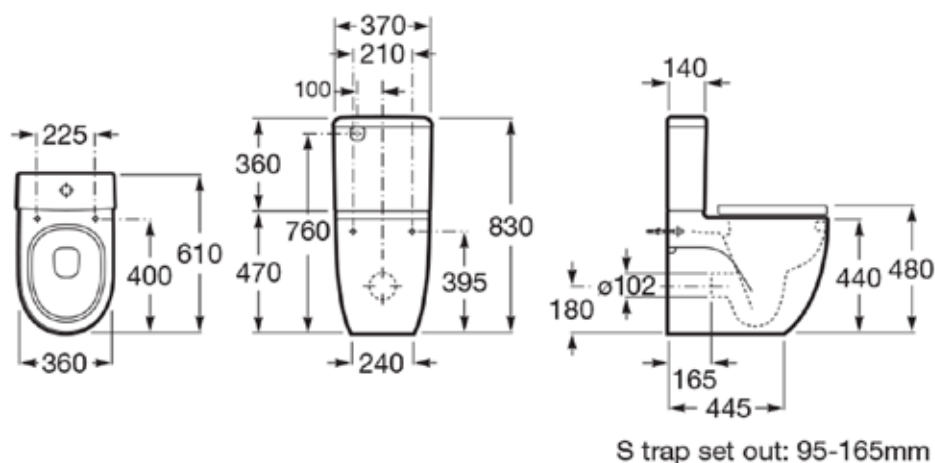


# ROCA

## MERIDIAN COMFORT HEIGHT BTW TOILET SUITE



Dimensions are nominal measurements only.

### SPECIFICATIONS

Recommended Use	Domestic, hotel and commercial
Material	Vitreous China
Colour	White
Water Inlet Position	Back inlet, left hand side
Inlet Valve	Recommended max. working pressure 1000kPa
Rim Configuration	Box Rim
Bowl Configuration	P Trap (Converts to S using plastic S-bend provided)
Seat	Matching top-fix, soft-close, quick-release seat supplied with pan
Cistern Fixing	Bolted directly to wall
Pan Fixing	Screwed into noggin in the wall prior to fitting cistern



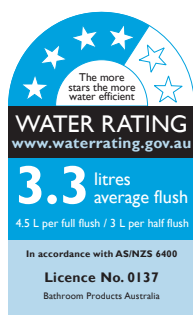
To see the complete ROCA range go to [www.reece.com.au/bathrooms](http://www.reece.com.au/bathrooms)

### CLEANING RECOMMENDATIONS

We recommend the use of soapy water or approved cleaners.

This product should not be cleaned with abrasive materials.

Damage caused by any improper treatment is not covered by the product warranty. Refer to Warranty Conditions.



**Disclaimer:** Products in this specification manual must by regulation be installed by licensed and registered trade people. The manufacturer/distributor reserves the right to vary specifications or delete models from their range without prior notification. Dimensions are nominal measurements only. Dimensions and set-outs listed are correct at time of publication however the manufacturer/distributor takes no responsibility for printing errors.

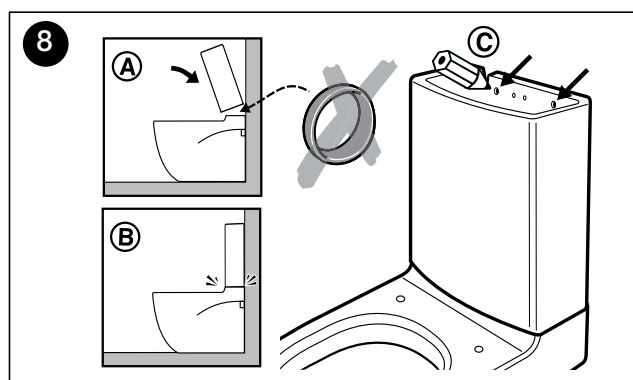
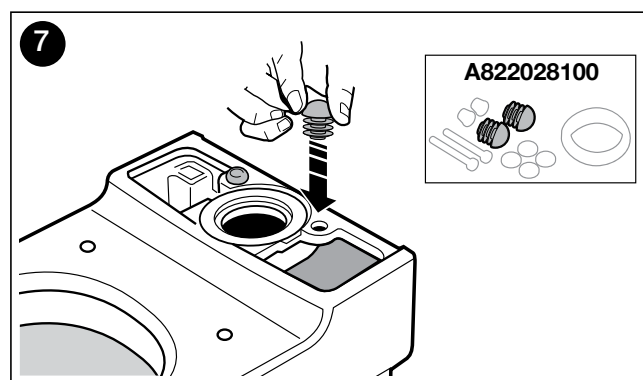
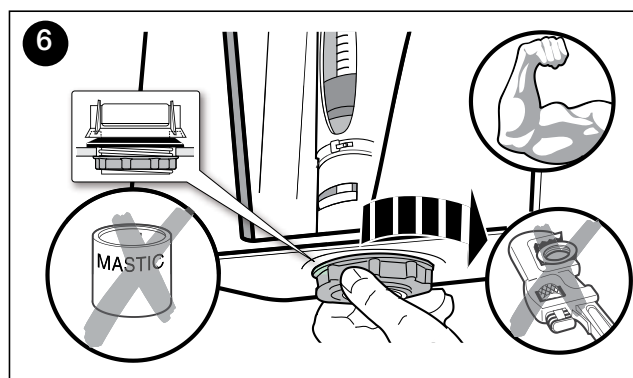
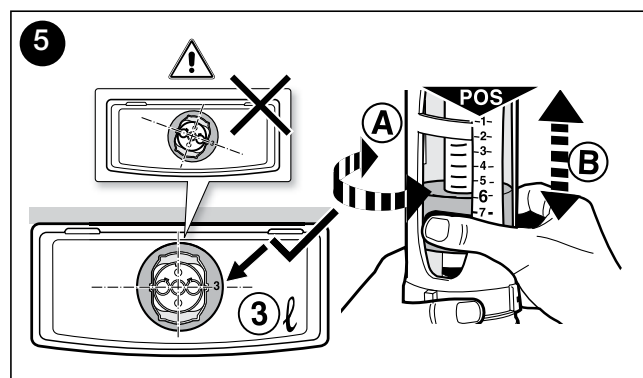
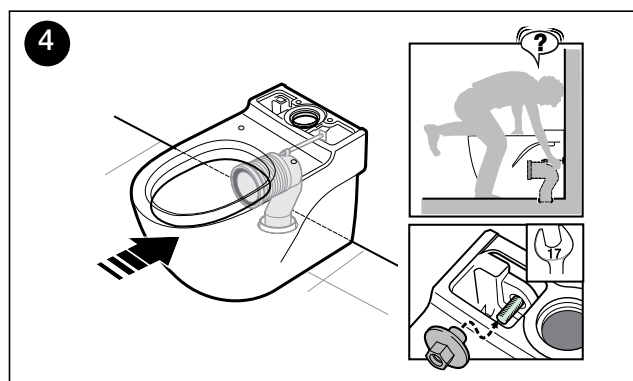
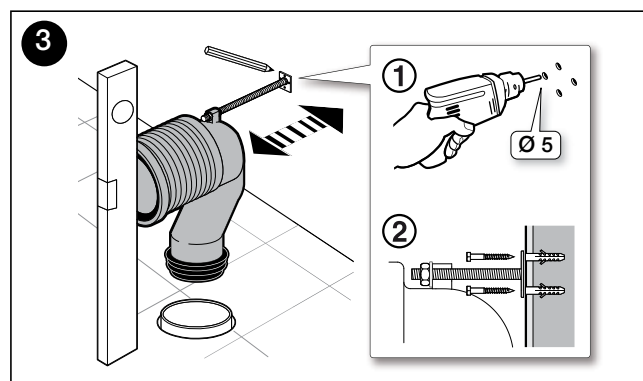
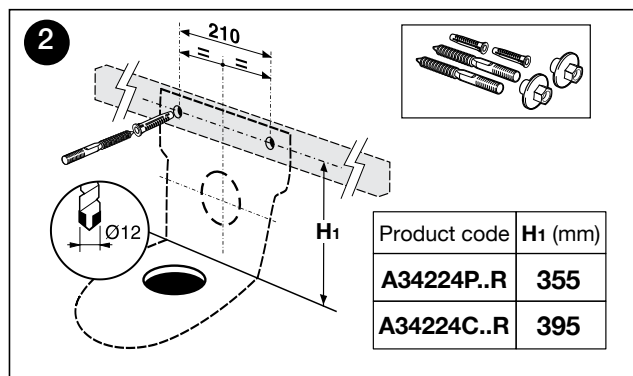
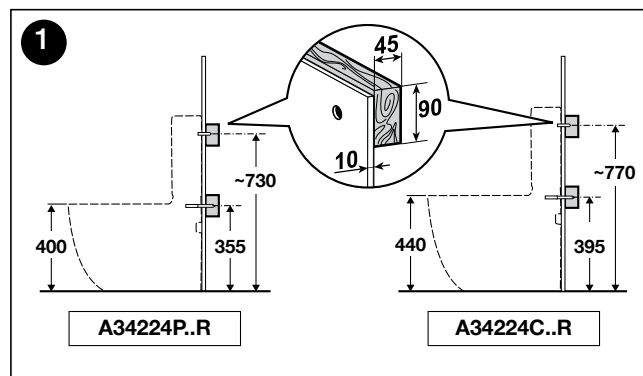
Tech Page Version 1



# ROCA

## MERIDIAN COMFORT HEIGHT BTW TOILET SUITE

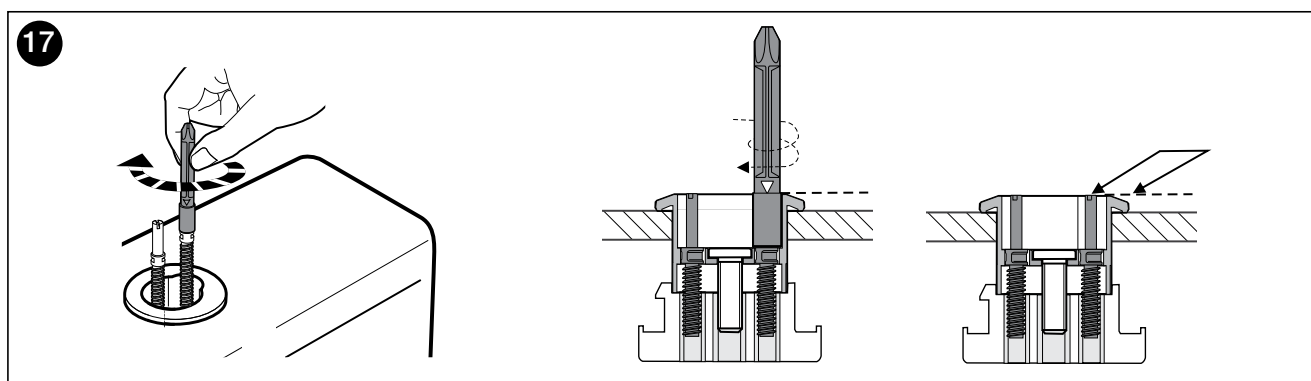
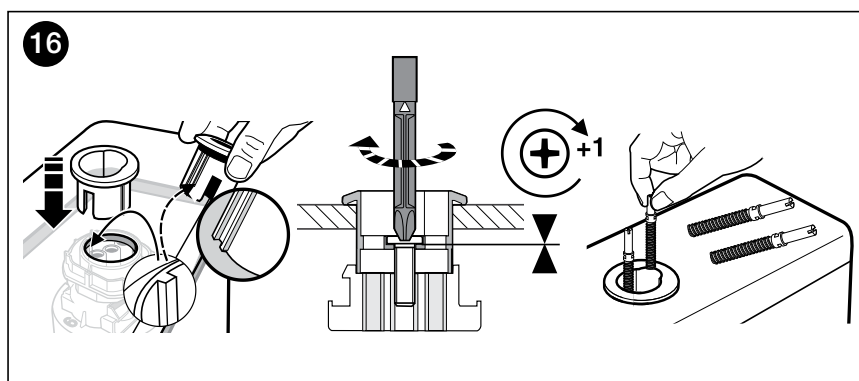
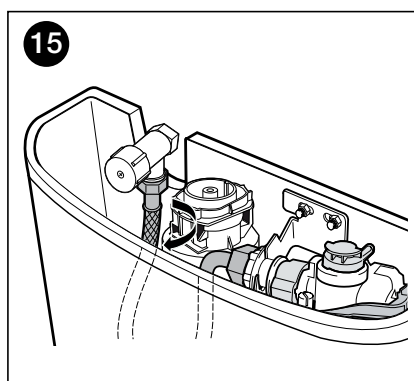
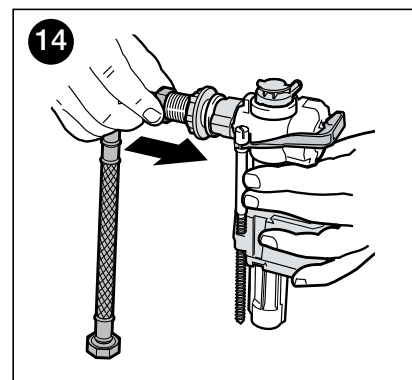
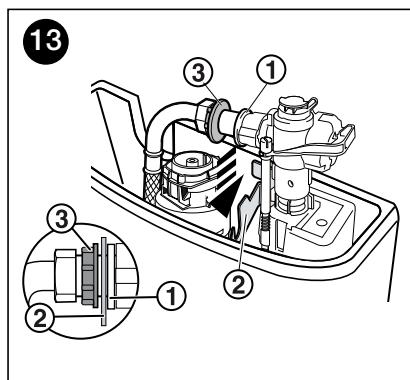
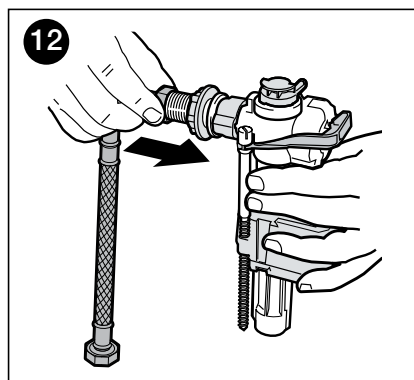
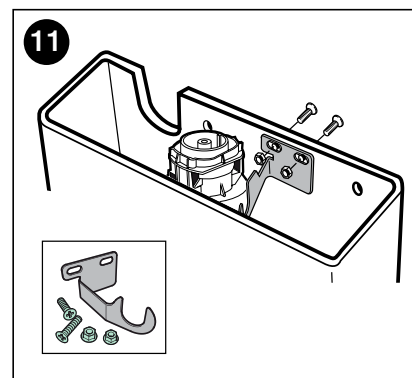
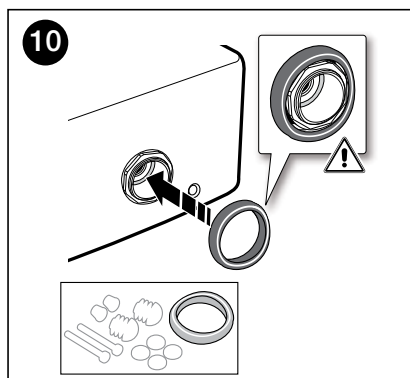
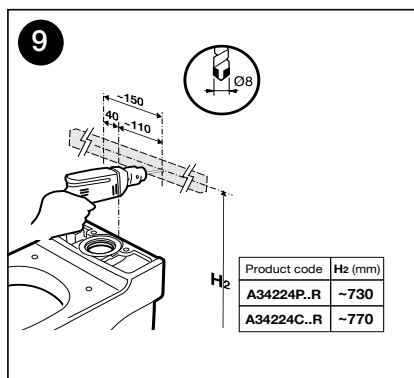
### INSTALLATION INSTRUCTIONS



# ROCA

## MERIDIAN COMFORT HEIGHT BTW TOILET SUITE

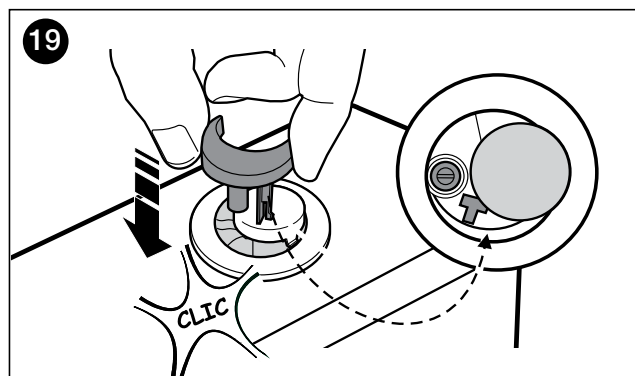
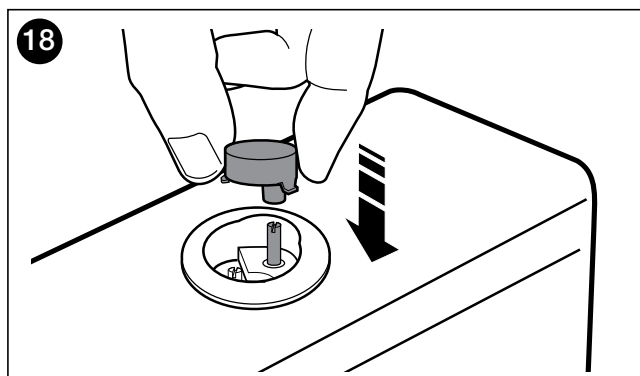
### INSTALLATION INSTRUCTIONS



# ROCA

## MERIDIAN COMFORT HEIGHT BTW TOILET SUITE

### INSTALLATION INSTRUCTIONS

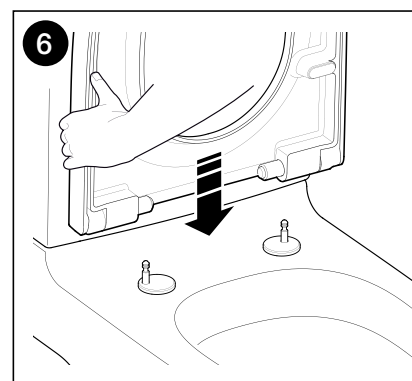
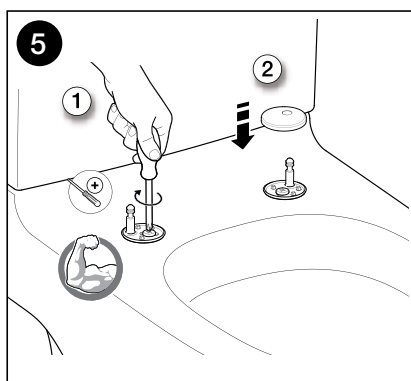
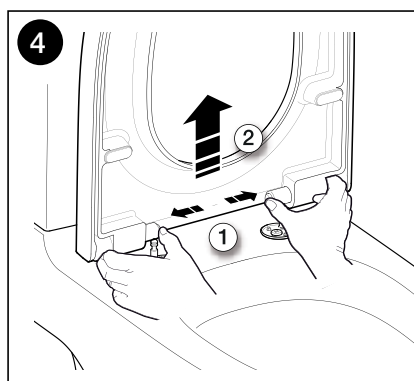
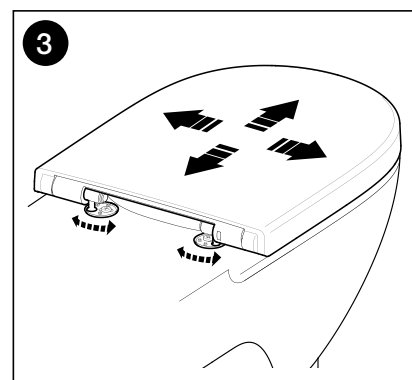
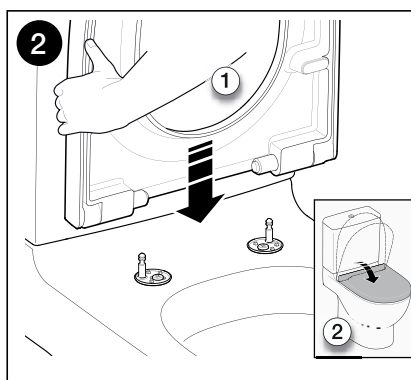
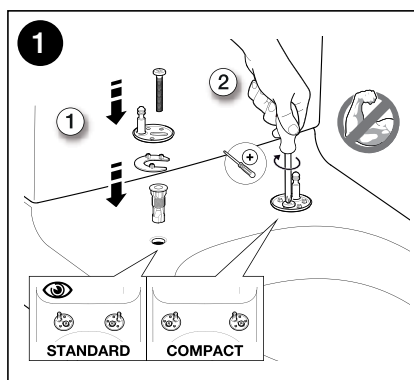
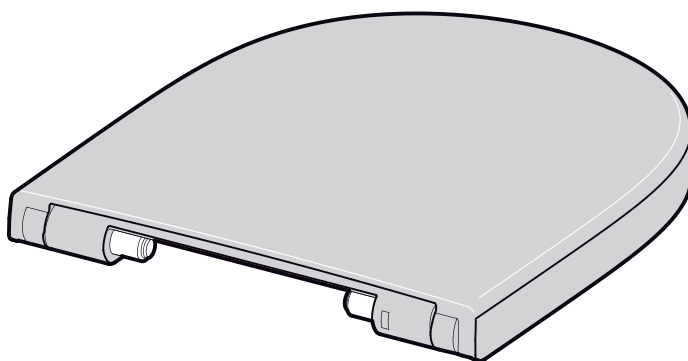


Plumbers, please ensure a copy of the installation instructions is left with the end user for future reference

# ROCA

## MERIDIAN COMFORT HEIGHT BTW TOILET SUITE

### INSTALLATION INSTRUCTIONS - SEAT

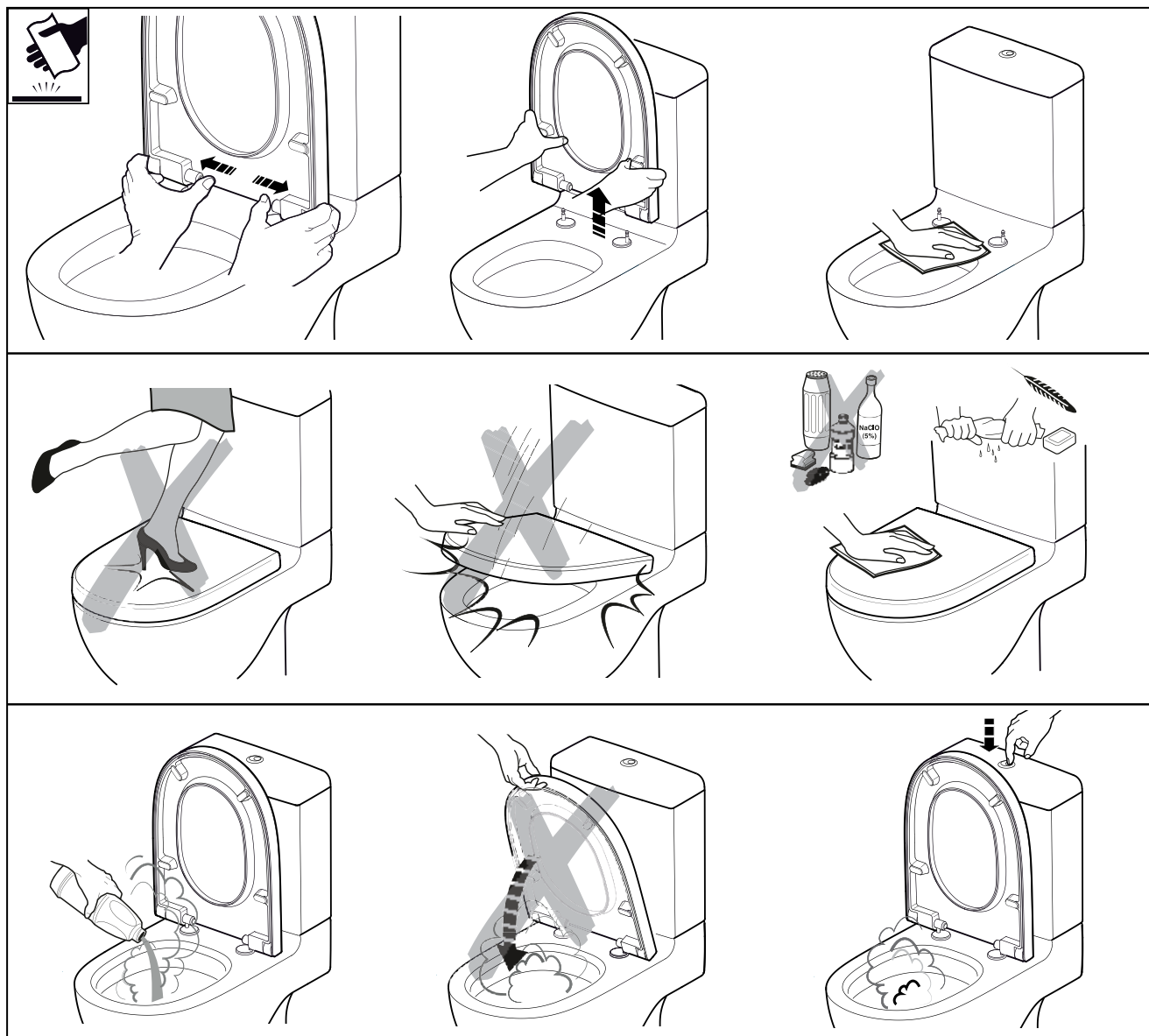


Plumbers, please ensure a copy of the installation instructions is left with the end user for future reference

# ROCA

## MERIDIAN COMFORT HEIGHT BTW TOILET SUITE

### INSTALLATION INSTRUCTIONS - SEAT



Plumbers, please ensure a copy of the installation instructions is left with the end user for future reference

# ROCA

## MERIDIAN BACK TO WALL PAN

### SPARE PARTS

Image	Reece Code	Product Description	Part Number
	9503600	Roca Flush buttons Hall, Meridian, The Gap Rimless, DSC, Victoria	AH0001800R
	9503598	Inlet Valve Fluidmaster 747 L	A82209630R
	9503596	Universal Roca Outlet Valve D4D	AH0000100R
	9504685	MERIDIAN C/C FOAM SEAL & CIST BOLTS	AV0020300R
	TBA	KHROMA ,The Gap Rimless and Meridian CC BTW Pan Wall Fixing Kit	AV0007500R
	TBA	Roca Back Inlet OU	Av0022300R
	9503698	Roca Outlet Valve Seal Washer	AH0007100R
	9502798	Dura Pan Bend	
	9503570	Meridian SCQR SEAT Standard MKII	
	9504724	Roca Seat hinges set	WY911691212001
	9506350	Roca Seat Buffer Set	WY911801414001

Plumbers, please ensure a copy of the installation instructions is left with the end user for future reference