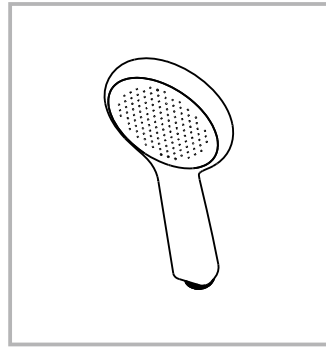


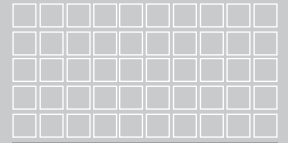
**41410.AQ**  
(FFASS505-000600BN0)  
GENIE MULTI PRESSURE 1FCT HAND PIECE AQUAMARINE

**41410.GY**  
(FFASS505-000440BN0)  
GENIE MULTI PRESSURE 1FCT HAND PIECE STEEL GREY

**41410.PK**  
(FFASS505-000560BN0)  
GENIE MULTI PRESSURE 1FCT HAND PIECE PETAL PINK



*American Standard*



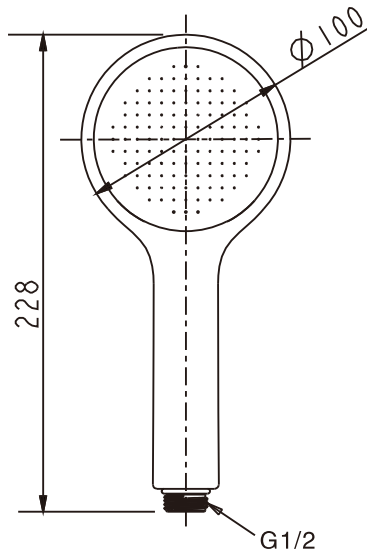
**Installation & Operation Instructions**

**Thank you for selecting American Standard the benchmark of fine quality for over 100 years.  
To ensure that your installation proceeds smoothly, please read these instructions carefully before you begin.**

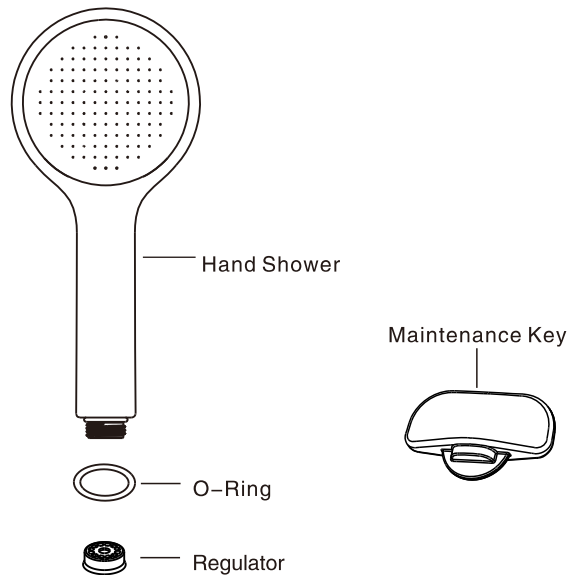
\* American Standard continually improves our product design and performance and reserves the right to modify the dimension and specification of our products accordingly without any prior notification.

## Dimension

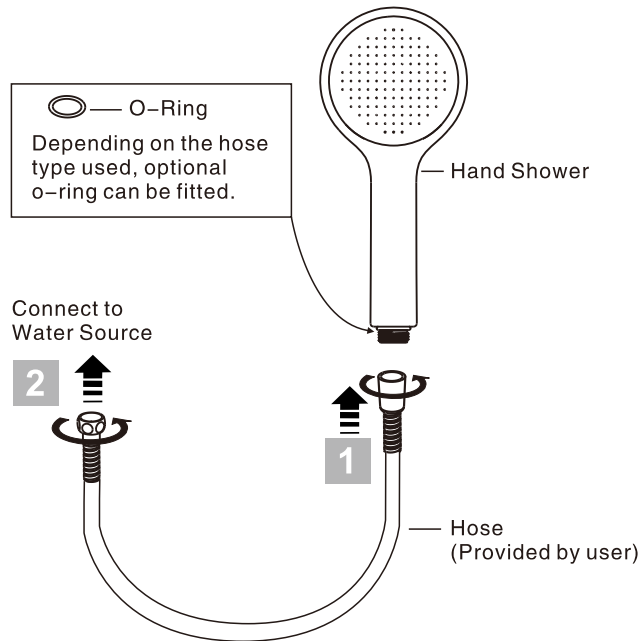
Unit: mm



## Parts List



## Installation



## Care & Maintenance

### Preparation

- \* Wash and clean the water supply pipeline.
- \* Check installation instructions to ensure correct installation.

### Conditions for use

- \* Water pressure condition: 0.05~0.5MPa
- \* Recommended maximum water temperature: 60°C
- \* Not for use as a steam outlet.

### Cleaning the surface

- \* Do not use abrasive cleaners or solvents on the product.
- \* To avoid scratching the surface, do not use abrasive materials such as scouring pad.
- \* Wrap a thick cloth around the product to prevent scratching or other damages during installation.

## Customer Care Support

Australia  
[customercare@reece.com.au](mailto:customercare@reece.com.au)  
1800 080 055

China  
800-820-3191 (Phone)  
400-820-3191 (Mobile)

Hong Kong  
[info@grohe.hk](mailto:info@grohe.hk)  
+852-2969-7067

India  
1800-102-8372

Indonesia  
[CustomerCare-Indonesia@Lixil.com](mailto:CustomerCare-Indonesia@Lixil.com)  
0-800-1-267823 (Toll Free)

New Zealand  
[sales@robertson.co.nz](mailto:sales@robertson.co.nz)  
+64-9-5730490

Philippines  
[customerserviceph@lixil.com](mailto:customerserviceph@lixil.com)  
+63-2-893-3113 local 506

Thailand  
+66-2-102-2222

Vietnam  
[customercareasvn@amstd.com](mailto:customercareasvn@amstd.com)  
1900-545460



**Attention:**  
Please leave manual with customer  
post installation.